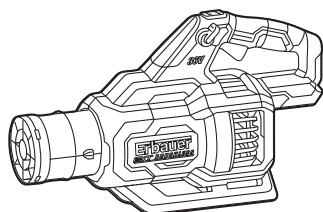
**EN ORIGINAL INSTRUCTIONS**

IMPORTANT - These instructions are for your safety. Please read through them thoroughly prior to handling the product and retain them for future reference.

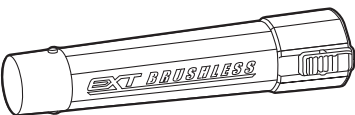


ERT1028GBL
5059340904870
(UK)
5059340904528
(EU)

EN Parts



01. x1

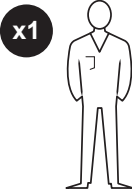


02. x1



03. x1

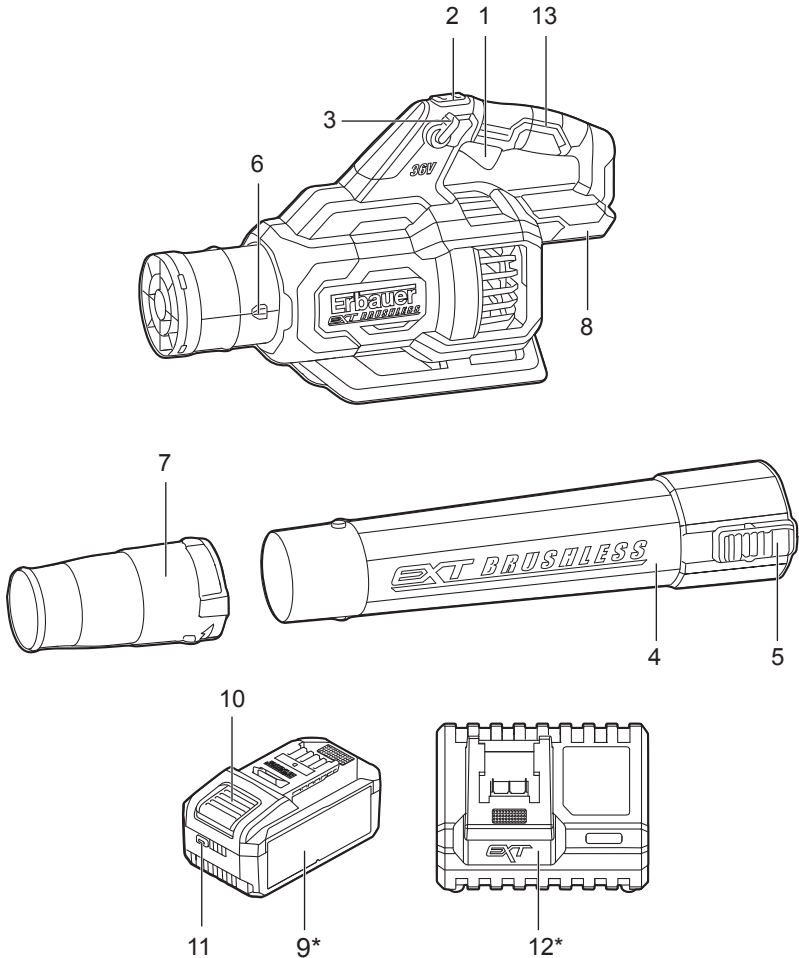
EN You will need



EN Contents

EN	
Product description	3
Safety	4
Technical specification	17
Before you start	18
Functions & Settings	22
Operation	23
Care and maintenance	24
Guarantee	27
Declaration of conformity	29

EN Product Description



- | | |
|----------------------------------|-----------------------------------|
| 1. Variable-speed trigger switch | 8. Battery docking port |
| 2. Turbo button | 9*. Battery pack |
| 3. Trigger-lock lever | 10. Battery pack release button |
| 4. Blower tube | 11. Battery pack power bar button |
| 5. Tube - release button | 12*. Charger |
| 6. Knob | 13. Handle/Grasping surface |
| 7. Nozzle | |

NOTE: * This may not be included in the supply scope.



General power machine safety warnings



WARNING! Read all safety warnings, instructions, illustrations and specifications provided with this machine. *Failure to follow all instructions listed below may result in electric shock, fire and/or serious injury.*

Save all warnings and instructions for future reference

The term “machine” in the warnings refers to your mains-operated (corded) machine or battery-operated (cordless) machine.

Work area safety

- a) **Keep work area clean and well lit.** *Cluttered or dark areas invite accidents.*
- b) **Do not operate machines in explosive atmospheres, such as in the presence of flammable liquids, gases or dust.** *Machines create sparks which may ignite the dust or fumes.*
- c) **Keep children and bystanders away while operating a machine.** *Distractions can cause you to lose control.*

Electrical safety

- a) **Machine plugs must match the outlet. Never modify the plug in any way. Do not use any adapter plugs with earthed (grounded) machines.** *Unmodified plugs and matching outlets will reduce risk of electric shock.*

- b) **Avoid body contact with earthed or grounded surfaces such as pipes, radiators, ranges and refrigerators.** *There is an increased risk of electric shock if your body is earthed or grounded.*
- c) **Do not expose machines to rain or wet conditions.** *Water entering a machine will increase the risk of electric shock.*
- d) **Do not abuse the cord. Never use the cord for carrying, pulling or unplugging the machine. Keep cord away from heat, oil, sharp edges or moving parts.** *Damaged or entangled cords increase the risk of electric shock.*
- e) **When operating a machine outdoors, use an extension cord suitable for outdoor use.** *Use of a cord suitable for outdoor use reduces the risk of electric shock.*
- f) **If operating a machine in a damp location is unavoidable, use a residual current device (RCD) protected supply.** *Use of an RCD reduces the risk of electric shock.*

Personal safety

- a) **Stay alert, watch what you are doing and use common sense when operating a machine. Do not use a machine while you are tired or under the influence of drugs, alcohol or medication.** *A moment of inattention while operating machines may result in serious personal injury.*

- b) **Use personal protective equipment. Always wear eye protection.** *Protective equipment such as a dust mask, non-skid safety shoes, hard hat, or hearing protection used for appropriate conditions will reduce personal injuries.*
- c) **Prevent unintentional starting. Ensure the switch is in the off-position before connecting to power source and/or battery pack, picking up or carrying the machine.** *Carrying machines with your finger on the switch or energising machines that have the switch on invites accidents.*
- d) **Remove any adjusting key or wrench before turning the machine on.** *A wrench or a key left attached to a rotating part of the machine may result in personal injury.*
- e) **Do not overreach. Keep proper footing and balance at all times.** *This enables better control of the machine in unexpected situations.*
- f) **Dress properly. Do not wear loose clothing or jewellery. Keep your hair and clothing away from moving parts.** *Loose clothes, jewellery or long hair can be caught in moving parts.*
- g) **If devices are provided for the connection of dust extraction and collection facilities, ensure these are connected and properly used.** *Use of dust collection can reduce dust-related hazards.*
- h) **Do not let familiarity gained from frequent use of machines allow you to become complacent and ignore machine safety principles.** *A careless action can cause severe injury within a fraction of a second.*

Machine use and care

- a) **Do not force the machine. Use the correct machine for your application.** *The correct machine will do the job better and safer at the rate for which it was designed.*
- b) **Do not use the machine if the switch does not turn it on and off.** *Any machine that cannot be controlled with the switch is dangerous and must be repaired.*
- c) **Disconnect the plug from the power source and/or remove the battery pack, if detachable, from the machine before making any adjustments, changing accessories, or storing machines.** *Such preventive safety measures reduce the risk of starting the machine accidentally.*
- d) **Store idle machines out of the reach of children and do not allow persons unfamiliar with the machine or these instructions to operate the machine.** *Machines are dangerous in the hands of untrained users.*
- e) **Maintain machines and accessories. Check for misalignment or binding of moving parts, breakage of parts and any other condition that may affect the machine's operation. If damaged, have the machine repaired before use.** *Many accidents are caused by poorly maintained machines.*
- f) **Keep cutting tools sharp and clean.** *Properly maintained cutting tools with sharp cutting edges are less likely to bind and are easier to control.*

- g) **Use the machine, accessories and tool bits etc., in accordance with these instructions, taking into account the working conditions and the work to be performed.** *Use of the machine for operations different from those intended could result in a hazardous situation.*
- h) **Keep handles and grasping surfaces dry, clean and free from oil and grease.** *Slippery handles and grasping surfaces do not allow for safe handling and control of the machine in unexpected situations.*

Battery machine use and care

- a) **Recharge only with the charger specified by the manufacturer.** *A charger that is suitable for one type of battery pack may create a risk of fire when used with another battery pack.*
- b) **Use machines only with specifically designated battery packs.** *Use of any other battery packs may create a risk of injury and fire.*
- c) **When battery pack is not in use, keep it away from other metal objects, like paper clips, coins, keys, nails, screws, or other small metal objects, that can make a connection from one terminal to another.** *Shorting the battery terminals together may cause burns or a fire.*
- d) **Under abusive conditions, liquid may be ejected from the battery; avoid contact. If contact accidentally occurs, flush with water. If liquid contacts eyes, additionally seek medical help. Liquid ejected from the battery may cause irritation or burns.**

- e) **Do not use a battery pack or machine that is damaged or modified.** *Damaged or modified batteries may exhibit unpredictable behaviour resulting in fire, explosion or risk of injury.*
- f) **Do not expose a battery pack or machine to fire or excessive temperature.** *Exposure to fire or temperature above 130°C may cause explosion.*
- g) **Follow all charging instructions and do not charge the battery pack or machine outside the temperature range specified in the instructions.** *Charging improperly or at temperatures outside the specified range may damage the battery and increase the risk of fire.*

Service

- a) **Have your machine serviced by a qualified repair person using only identical replacement parts.** *This will ensure that the safety of the machine is maintained.*
- b) **Never service damaged battery packs.** *Service of battery packs should only be performed by the manufacturer or authorized service providers.*

Blower safety warnings

- a) **Do not use the machine in bad weather conditions, especially when there is a risk of lightning.** *This decreases the risk of being struck by lightning.*
- b) **Wear eye protection and ear protection.** *Adequate protective equipment will reduce the risk of personal injury.*

- c) **While operating the machine, always wear non-slip and protective footwear. Do not operate the machine when barefoot or wearing open sandals. *This reduces the risk of injury to the feet.***
- d) **Do not wear loose fitting clothing or articles such as scarves, strings, chains, ties, etc., that could get drawn into the air inlets. Tie back or cover long hair to make sure it does not get drawn into the air inlets. *If any of these items are drawn into the air inlets, it can increase the risk of personal injury.***
- e) **Keep bystanders away while operating the machine. *Thrown debris can increase the risk of personal injury.***
- f) **Never point the blower nozzle in the direction of people or pets or in the direction of windows. Use extra caution when blowing debris near solid objects, such as trees, automobiles and walls that can cause debris to ricochet. *Thrown objects can damage property and increase the risk of personal injury.***
- g) **Do not use the machine to blow anything that is burning or smoking, such as cigarettes, matches or hot ashes. *These ignition sources may increase the risk of fire.***
- h) **Do not touch the fan while still in motion. Turn off the machine, wait until the fan stops and unplug the machine, before removing any part that may give access to the fan. *This reduces the risk of injury from moving parts.***

- i) **When clearing jammed material or servicing the machine, make sure the power switch is off.** *Unexpected actuation of the machine while clearing jammed material or servicing may increase the risk of personal injury.*
- j) **Thoroughly inspect the area for wildlife where the machine is to be used.** *Wildlife may be injured by the machine during operation.*

Additional safety warnings for battery pack

- a) **Battery pack needs to be charged before use.** *Always refer to the charger's instruction and charge it properly.*
- b) **Remove the battery pack from the product when not in use.**
- c) **Don't maintain the battery pack on the charger when not in use.**
- d) **After extended periods of storage, it may be necessary to charge and discharge the battery pack several times to obtain the maximum performance.**
- e) **Longer life and better performance can be obtained if the battery is charged when the air temperature is between 18°C and 24°C.** *Do not charge the battery in air temperature below 5°C or above 40°C. This is important as it can prevent serious damage to the battery.*
- f) **Do not charge battery in a damp or wet location.** *Following this rule will reduce the risk of electric shock.*
- g) **Do not disassemble the battery and avoid mechanical damage to the battery. Risk of short circuit and fumes may be emitted.** *Ensure fresh air and seek medical assistance in the event of discomfort.*

- h) When disposing of battery pack, keep the battery pack of different electrochemical systems separate from each other.**

Vibration and noise reduction

To reduce the impact of noise and vibration emission, limit the time of operation, use low-vibration and low- noise operating modes as well as wear personal protective equipment.

Take the following points into account to minimize the vibration and noise exposure risks:

1. Only use the product as intended by its design and these instructions.
2. Ensure that the product is in good condition and well maintained.
3. Use correct application tools for the product and ensure they in good condition.
4. Keep tight grip on the handles/grip surface.
5. Maintain this product in accordance with these instructions and keep it well lubricated (where appropriate).
6. Plan your work schedule to spread any high vibration tool use across a longer period of time.

The European Physical Agents (Vibration) Directive has been brought in to help reduce hand arm vibration syndrome injuries to users of product's with vibration emission. The directive requires manufacturers and suppliers to provide indicative vibration test results to enable users to make informed decisions as to the period of time a product can be used safely on a daily basis and the choice of tool. Further advice can be found at www.hse.gov.uk

Emergency

Familiarise yourself with the use of this product by means of this instruction manual. Memorise the safety directions and follow them to the letter. This will help to prevent risks and hazards.

- 1. Always be alert when using this product, so that you can recognise and handle risks early.** *Fast intervention can prevent serious injury and damage to property.*
- 2. Switch off and disconnect from the power supply if there are malfunctions.** *Have the product checked by a qualified professional and repaired, if necessary, before you operate it again.*

Residual risks

Even if you are operating this product in accordance with all the safety requirements, potential risks of injury and damage remain. The following dangers can arise in connection with the structure and design of this product:


1. Health defects resulting from vibration emission if the product is being used over long periods of time or not adequately managed and properly maintained.
2. Injuries and damage to property due to broken accessories or the sudden impact of hidden objects during use.
3. Danger of injury and property damage caused by flying objects.
4. Prolonged use of this product expose the operator to vibrations and may produce 'whitefinger' disease. In order to reduce the risk, please wear gloves and keep your hands warm. If any of the 'whitefinger' symptoms appear, seek medical advice immediately. 'Whitefinger' symptoms include: numbness, loss of feeling, tingling, pricking, pain, loss of strength, changes in skin colour or condition. These symptoms normally appear in the fingers, hands or wrists. The risk increases at low temperatures.



WARNING! This product produces an electromagnetic field during operation! This field may under some circumstances interfere with active or passive medical implants! To reduce the risk of serious or fatal injury, we recommend persons with medical implants to consult their doctor and the medical implant manufacturer before operating this product!

Symbols

On the product, the rating label and within these instructions you will find among others the following symbols and abbreviations. Familiarise yourself with them to reduce hazards like personal injuries and damage to property.

V 	Volt, (direct current voltage)	km/h	Kilometre/Per hour
m3/min	Cubic metre/Per minute	mm	Millimetre
kg	Kilogram	mAh	Milliampere
A	Ampere	°C	Degree centigrade
dB(A)	Decibel (A-rated)	m/s ²	Metres per second squared
yyWxx	Manufacturing date code: year of manufacturing (20yy) and week of manufacturing (Wxx).		



Read the instruction manual



Caution / Warning.



Wear eye protection



Wear ear protection



Wear safety footwear



Wear protective gloves



Wear protective clothing



Use appropriate protection for foot-leg and hand-arm.



Wear a safe shield



Wear a mask



Do not expose to rain



Keep bystanders away.



Guaranteed sound power level value in XX dB(A).



Switch the product off before assembly, cleaning, adjustments, maintenance, storage and transportation.



WEEE symbol. Waste electrical products should not be disposed of with household waste. Please recycle where facilities exist. Check with your Local Authority or local store for recycling advice.



Crossed out dust bin. Batteries and battery packs should not be disposed of with household waste. Please recycle where facilities exist. Check with your Local Authority or local store for recycling advice



Do not dispose of battery packs in rivers or immerse in water.



Do not dispose of battery packs in fire. They will explode and cause injury.



Do not expose battery packs to heat in excess of 40 °C.

Do not charge or store the battery pack in temperatures below 5 °C (41 °F) and above 40 °C (104°F).



The product complies with the applicable Your product European directives and an evaluation method of conformity for these directives was done.



UK Conformity Assessed.

Rating label explanation

Cordless Blower: ERT1028GBL

ER= Brand name (Erbauer)

T=36V Lithium-Ion

1028=Serial number

GBL=Garden blower

EN Technical specifications

General:

> Rated voltage	36V ---
> Airflow speed	Max. 245 km/h (with nozzle)
> Air volume	Max. 16.5 m ³ /min (without nozzle)
> Dimensions	approx. 630mm* 160mm* 270mm
> Weight (without battery pack)	approx. 2.1 kg
> Ambient temperature range for machine and battery use	0°C to 40°C

Battery pack (may not be included)

> Model no.	ERT1044BAT	ERT1045BAT
> Type	Li-Ion	Li-Ion
> Voltage	18 V --- / 36 V ---	18 V --- / 36 V ---
> Capacity	8 Ah / 4Ah	6 Ah / 3 Ah
> Weight	approx. 1.2 kg	approx. 1.2 kg



NOTE: This equipment is compatible with the Erbauer EXT 18V/36V dual-voltage lithium-ion battery range. For optimal performance, use 1X 4.0Ah battery.

Charger for battery pack (may not be included)

> Model no.	ERT1047CHR	ERT1046CHR
> Rated input	220-240 V~ 50/60 Hz	220-240 V~ 50/60 Hz
> Rated output	21 V --- 12 A	21 V --- x2 12 A x2
> Ambient temperature range for, charger and battery use	5°C to 40°C	5°C to 40°C

Sound values:

> Sound pressure level L_{pA}	84 dB(A)
> Uncertainty K_{pA}	3 dB(A)
> Measured sound power level L_{WA}	95 dB(A)
> Uncertainty K_{WA}	1.0 dB(A)
> Guaranteed sound power level	96 dB(A)
> Vibration value a_h	0.6 m/s ²
> Uncertainty K	1.5 m/s ²

The sound value(s) have been determined according to noise test code given in EN 62841-1 and EN 15503:2009+A1:2013+A2:2015, using the basic standards EN ISO 3744 & directive 2000/14/EC and its amendments. The sound intensity level for the operator may exceed 80 dB(A) and ear protection measures are necessary.

The declared total vibration value(s) and the declared noise emission value(s) have been measured in accordance with a standard test method and may be used for comparing one tool with another;

The declared total vibration value(s) and the declared noise emission value(s) may also be used in a preliminary assessment of exposure.



WARNING! The vibration and noise emission during actual use of the power tool can differ from the declared total value depending on the ways in which the tool is used especially what kind of workpiece is processed;

The need to identify safety measures to protect the operator that are based on an estimation of exposure in the actual conditions of use (taking account of all parts of the operating cycle such as the times when the tool is switched off and when it is running idle in addition to the trigger time).



EN Before you start

Unpacking

1. Unpack all parts and lay them on a flat, stable surface.
2. Remove all packing materials and shipping devices if applicable.
3. Make sure the delivery contents are complete and free of any damage. If you find that parts are missing or show damage do not use the product but contact your dealer. Using an incomplete or damaged product represents a hazard to people and property.
4. Ensure that you have all the accessories and tools needed for assembly and operation. This also includes suitable personal protective equipment.



WARNING! The product and the packaging are not children's toys! Children must not play with plastic bags, sheets and small parts! There is a danger of choking and suffocation!

You will need

(items not supplied)

Suitable personal protective equipment

(items supplied)

Blower tube

Nozzle



NOTE: The accessories required depend on the intended application. Ask your dealer for advice.

EN Assembly



WARNING! The product must be fully assembled before operation! Do not use a product that is only partly assembled or assembled with damaged parts!



WARNING! Disconnect the battery pack from the machine before making any assembly, adjustments, changing accessories, or storing machine. Such preventive safety measures reduce the risk of starting the machine accidentally.



Follow the assembly instructions step-by-step and use the pictures provided as a visual guide to easily assemble the product!

Before using the product, familiarise yourself with the operating features read the entire instruction manual paying particular attention to the safety rules and operating procedures.

Do not connect the product to battery pack before it is completely assembled!

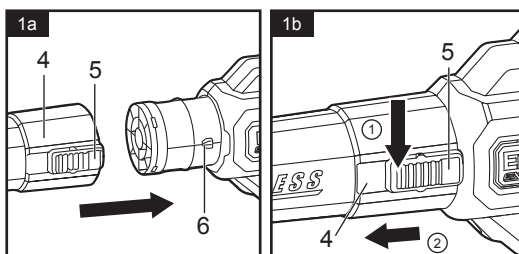
Assembling the blower tube

Installing the blower tube

Align the tube – release button (5) with the knob (6) on the blower housing. Push the blower tube (4) onto the blower housing until it snaps into place with “Click” (Fig. 1a).

Removing the blower tube

To remove the blower tube (4), press and hold down the tube-release button (5) and then pull the tube straight from the blower housing (Fig. 1b).



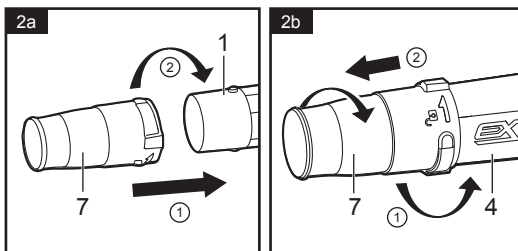
Assembling the nozzle

Installing the nozzle

Align the groove on the nozzle (7) with the emboss on the blower tube (4). Push the nozzle (7) onto the blower tube (4) until it snaps into place, then rotate it to the lock position. (Fig. 2a)

Removing the nozzle

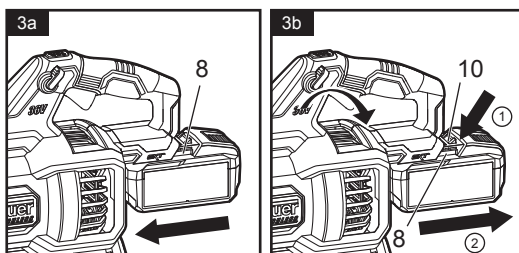
To remove the nozzle (7), rotate it to the unlock position and pull the nozzle (7) straight from the blower tube (4) (Fig. 2b).



Battery pack

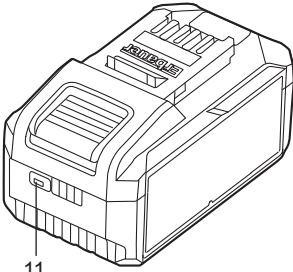






Attaching / releasing the battery pack

1. Slide the battery pack into the battery docking port (8) until it is securely locked in position. A simple push and slight pressure will be sufficient. (Fig. 3a)
2. Depress the battery pack release button (10) to release and slide the battery pack out from your tool. (Fig. 3b)



Battery Pack Power bar

The Li-Ion battery pack is equipped with a power bar which is used to give an indication of the battery pack's remaining charge. Press the power bar button (11) to check battery charge as below. The LED will stay lit for approximately 5 seconds.

 11  On  Off	76-100% Charge	
	51-75% Charge	
	26-50% Charge	
	5-25% Charge	

EN Functions & settings

Intended use

This blower ERT1028GBL is designated with a rated voltage of 36V .The product is intended for blowing dry leaves for piling up or removing material of hard to reach places. The product must not be used in areas where there is health damaging dust or as a wet blowing device. The product may only be used with the blowing tube fully installed. Avoid wet materials such as leaves and dirt, twigs, branches, pine needles, grass, earth, sand, mulch, cuttings etc. Do not use on wet lawns, grassy areas or fields.

On/Off the blower (Fig.4)

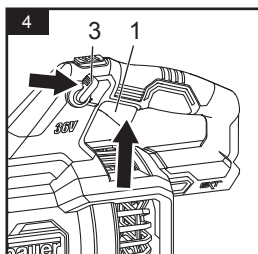
The variable-speed trigger switch (1) turns the blower ON/OFF and controls the speed.

The blower is also equipped with a trigger-lock lever (3) to turn the blower ON/OFF and lock the blower at a certain speed.

To Turn the Blower ON

To turn the blower ON, depress the variable-speed trigger switch (1). The variable-speed trigger switch (1) delivers higher speed with increased trigger pressure and lower speed with decreased trigger pressure.

The trigger-lock lever (3) can also be pulled back to start the blower without needing to first depress the variable-speed trigger switch (1). The blower runs at higher speeds as the lever is moved further back. To keep the blower running at a certain speed, move the trigger-lock lever (3) toward the back of the tool.



To Turn the Blower OFF

- If the trigger-lock lever (3) is not engaged, release the variable-speed trigger switch (1).
- If the trigger-lock lever (3) is engaged, move the trigger-lock lever (3) forward to the unlocked position.

Turbo mode

Press the turbo button (2) while working to temporarily increase the air speed to the maximum level. The blower will resume the previous speed when the turbo button is released.

EN Operation

Operating the blower



WARNING!

- Always wear eye protection and ear protection. Failure to do so could result in objects being thrown into your eyes and ears.
- Do not use any attachments or accessories not recommended by the manufacturer, it can result in serious personal injury.
- Before each use, inspect the entire product for damaged, missing, or loose parts, such as screws, nuts, bolts, caps, etc. Tighten securely all fasteners and caps and do not operate this product until all missing or damaged parts are replaced.
- To keep from scattering debris, blow around the outer edges of a debris pile. Never blow directly into the center of a pile.
- To reduce sound levels, limit the number of pieces of equipment used at any one time.
- Use rakes and brooms to loosen debris before blowing it to clear it. In dusty conditions, slightly dampen surfaces if water is available.
- Watch out for children, pets, open windows, or freshly washed cars, and blow debris safely away.
- After using blowers or other equipment, clean up! Dispose of debris properly.
- Detach the battery from the blower when the motor stopped.
- Always hold the handle when operation the blower, and stand behind the blower, never use blower to blow directly to the people around.
- Advice that the blower is intended to be used by the operator at ground level and not on ladders or any unstable support.
- Advice to inspect the blower for damage if there appears to be excessive vibration.
- When clearing blockages or jammed material in the machine, make sure the power switch is off and the battery is disassembled.
- Advice to keep any ventilation openings clear of debris.
- Always watch out the danger of rotating part.
- Keep children, other bystanders and pets away from the machine while operating.
- Do not operate the machine near open windows.
- Recommended to operate the machine only at reasonable hours – not early in the morning or late at night when people might be disturbed.
- Recommended to use the full blower nozzle extension so the air stream can work close to the ground.

NOTICE: Static electric shock may occur in certain conditions, such as use in low humidity environments such as deserts or cold winter climates and use when fine dust is present. This electric shock is not caused by the electrical system of the blower.

NOTICE: Wear ear protection to prevent damage to the ears

EN Care and maintenance

The golden rules for care



WARNING! Always switch the product off, remove the battery pack and let the product cool down before performing inspection, maintenance and cleaning work!

1. Keep the product clean. Remove debris from it after each use and before storage.
2. Regular and proper cleaning will help ensure safe use and prolong the life of the product.
3. Inspect the product before each use for worn and damaged parts. Do not operate it if you find broken and worn parts.



WARNING! Only perform repairs and maintenance work according to these instructions! All further works must be performed by a qualified specialist!

General cleaning

1. Make sure the product is switched off, cooled down and the battery pack is removed.
2. Clean the product with a slightly damp cloth and mild soap. Use a brush for areas that are hard to reach.
3. In particular, clean the air vents after every use with a cloth and brush.
4. Remove stubborn dirt with high pressure air (max. 3 bar).
5. Cleaning and maintenance before storage.



NOTE: Do not use chemical, alkaline, abrasive or other aggressive detergents or disinfectants to clean this product as they might be harmful to its surfaces.


6. Check for any damage and wear. Repair damages in accordance with this instruction manual or take it to an authorised service centre before using the product again.

Repair

This product does not contain any parts that can be repaired by the consumer. Contact an authorized service centre or a similarly qualified person to have it checked and repaired.

Storage

1. Clean the product as described above.
2. Store the product and its accessories in a dry, frost-free, well-ventilated place.
3. Always store the product in a place that is inaccessible to children. The ideal storage temperature is between 10 and 30°C.
4. We recommend using the original package for storage to protect against dust.

5.  **WARNING!** Always charge the battery pack before storage! Please charge the battery pack to 3 bars on the battery light indicator. If the tool will not be used for long periods of time, charge the battery pack every 3-6 months. It is important to disconnect the charger from the power supply after charging has finished. Cool down battery pack from a just-operated product for approximately 20 minutes before attempting to recharge!

Transportation

1. Switch the product off and remove the battery pack.
2. Attach transportation guards, if applicable.
3. Always carry the product on its handles.
4. Protect the product from any heavy impact or strong vibrations which may occur during transportation in vehicles.
5. Secure the product to prevent it from slipping or falling over.

Troubleshooting

Suspected malfunctions are often due to causes that the users can fix themselves. Therefore check the product using this section. In most cases the problem can be solved quickly.



WARNING! Only perform the steps described within these instructions! All further inspection, maintenance and repair work must be performed by an authorised service centre or a similarly qualified specialist if you cannot solve the problem yourself!

Problem	Possible cause	Solution
1. Tool does not work.	1.1. Low battery pack capacity.	1.1. Charge the battery pack
	1.2. The battery pack or blower are too hot	1.2. Turn off the blower and allow the blower and battery pack to cool.
2. The air velocity decreases noticeably	2.1. The air inlet is blocked by debris.	2.1. Remove the battery pack, clear the debris.

Recycling and disposal



Waste electrical products should not be disposed of with household waste. Please recycle where facilities exist. Check with your Local Authority or local store for recycling advice.

For further information visit www.recycle-more.co.uk.

The product comes in a package that protects it against damage during shipping. Keep the package until you are sure that all parts have been delivered and the product is working properly. Recycle the package afterwards.

Disposal of an exhausted battery pack



The battery is Li-Ion type. To preserve natural resources, please recycle or dispose of the battery pack properly. Consult your local waste authority for information regarding available recycling and / or disposal options.

Discharge your battery pack by operating your tool, then remove the battery pack from the tool and cover the battery pack connections with heavy duty adhesive tape to prevent short circuit and energy discharge.

Do not attempt to open or remove any of the components.

EN Guarantee

At **Erbauer** we take special care to select high quality materials and use manufacturing techniques that allow us to create ranges of products incorporating design and durability.

We carry out stringent testing procedures on all our tools and are confident that they can provide regular, sustained daily use during the period covered.

This power tool is guaranteed for 3 years from the date of purchase, if bought in store, delivered or bought online. You may only make a claim under this guarantee upon presentation of your sales receipt or purchase invoice. Please keep your proof of purchase in a safe place.

This guarantee covers product failures and malfunctions provided the **Erbauer** power tool was used for the purpose for which it is intended and subject to installation, cleaning, care and maintenance in accordance with standard practice and with the information contained above and in the user manual. This guarantee does not cover defects and damage caused by or resulting from:

- Normal wear and tear
- Overload, misuse or neglect
- Repairs attempted by anyone other than an authorized agent
- Cosmetic damage
- Damage caused by foreign objects, substances or accidents
- Accidental damage or modification
- Failure to follow manufacturer's guidelines
- Loss of use of the goods

This guarantee is limited to parts recognised as defective. It does not, in any case, cover ancillary costs (movement, labour) and direct and indirect damage. If the **Erbauer** power tool is defective during the guarantee period, then we reserve the right, at our discretion, to replace the item with a product of equivalent quality and functionality or to provide a refund.

This guarantee only applies to the country of purchase or delivery and is not transferrable to any other countries. This guarantee is non-transferrable to any other person or product. Relevant local law will apply to this guarantee.

Guarantee related queries should be addressed to a store affiliated with the distributor from where you purchased the **Erbauer** power tool.

Erbauer battery and charger are guaranteed for 2 years and covered by all others terms within the above guarantee.

This guarantee is in addition to and does not affect your statutory rights relating to faulty goods as a consumer.

Manufacturer:

Kingfisher International Products Limited

1 Paddington Square, London, W2 1GG, United Kingdom www.kingfisher.com/products

Distributor:

B&Q plc

Chandlers Ford, Hants, SO53 3LE, United Kingdom

www.diy.com

Screwfix Direct Limited

Trade House, Mead Avenue, Yeovil, BA22 8RT, United Kingdom

www.screwfix.com

**IMPORTANT - RETAIN THIS
INFORMATION FOR FUTURE
REFERENCE: READ CAREFULLY**

EN Customer care and technical helpline

A better way to repair your tools

Kingfisher takes special care in creating high-quality garden power tools that are designed to last. But if a fault develops with your garden power tool and you need to claim under the guarantee, the Customer Care and Technical Helpline can support with technical assistance or if required, arrange a free courier collection from your home, assess your garden power tool for fault, repair it, and return it.

Deciding to repair your product rather than buying a replacement and adding to the mountain of waste is a more sustainable choice and you will be doing your bit for the environment.

How does it work?



NOTE: Before collection, all fuel must be removed from petrol powered machines.

Get in touch

If you need help or more information, please contact the Customer Care and Technical Helpline:

UK 0330 678 3077

ROI 1 800 365 800

Opening hours are Monday – Friday, 8am-5pm

Availability of spare parts

Contact the customer service helpline for assistance or visit www.kingfisherspares.com

For assistance contact the customer services helpline:

UK 0800 0789647 uk@kingfisherservice.com

EIRE 1800 932226 eire@kingfisherservice.com

Further information about this product can also be found at:

www.kingfisher.com/products



EN Declaration of conformity



(EN) EU DECLARATION OF CONFORMITY
(FR) DÉCLARATION UE DE CONFORMITÉ
(PL) DEKLARACJA ZGODNOŚCI UE
(RO) DECLARAȚIA DE CONFORMITATE UE
(ES) DECLARACIÓN UE DE CONFORMIDAD
(PT) DECLARAÇÃO DE CONFORMIDADE UE

Product/ Produit/ Produkt/Produsul/Producto/Produto

- Cordless Blower/ Souffleur Sans Fil/ Bezprzewodowa Dmuchawa Do Liści/ Suflantă Fără Fir/ Soprador Inalámbrico/Soprador De Folhas Sem Fios
- 82006.1/ERT1028GBL
- Serial number 00001-99999

Name and address of the manufacturer or his authorised representative:

Nom et adresse du fabricant ou de son mandataire:

Nazwa i adres producenta lub jego upoważnionego przedstawiciela:

Denumirea și adresa producătorului sau a reprezentantului său autorizat:

Nombre y dirección del fabricante o de su representante autorizado:

Nome e endereço do fabricante ou do respetivo mandatário:

Kingfisher International Products B.V.,
 Rapenburgerstraat 175E,
 1011 VM Amsterdam,
 The Netherlands

This declaration of conformity is issued under the sole responsibility of the manufacturer.

La présente déclaration de conformité est établie sous la seule responsabilité du fabricant.

Niniejsza deklaracja zgodności wydana zostaje na wyłączną odpowiedzialność producenta.

Prezenta declarație de conformitate este emisă pe răspunderea exclusivă a producătorului.

La presente declaración de conformidad se expide bajo la exclusiva responsabilidad del fabricante.

A presente declaração de conformidade é emitida sob a exclusiva responsabilidade do fabricante.

Object of the declaration/Objet de la declaration/Przedmiot deklaracji/Obiectul declarației/Objeto de la declaración/Objeto da declaração

Product/ Produit/ Produkt/Produsul/ Producto/
 Produto

Cordless Blower/ Souffleur Sans Fil/
 Bezprzewodowa Dmuchawa Do Liści/ Suflantă Fără
 Fir/ Soprador Inalámbrico/Soprador De Folhas Sem
 Fios

Model/ Modèle/ Model/ Modelul/ Modelo/ Modelo

82006.1/ERT1028GBL

The object of the declaration described above is in conformity with the relevant Union harmonisation legislation:

L'objet de la déclaration décrit ci-dessus est conforme à la législation d'harmonisation de l'Union applicable:

Wymieniony powyżej przedmiot niniejszej deklaracji jest zgodny z odpowiednimi wymaganiami unijnego prawodawstwa harmonizacyjnego:

Obiectul declarației descris mai sus este în conformitate cu legislația relevantă de armonizare a Uniunii:

El objeto de la declaración descrita anteriormente es conforme con la legislación de armonización pertinente de la Unión:

O objeto da declaração acima descrito está em conformidade com a legislação de harmonização da União aplicável:

<p>2006/42/EC as amended Machinery Directive 2014/30/EU as amended Directive Electromagnetic compatibility 2000/14/EC as amended Outdoor Noise Directive 2011/65/EU as amended Directive Restriction of the use of certain hazardous substances in electrical and electronic equipment Directive 2006/42/CE relative aux machines 2014/30 / UE telle que modifiée Directive Compatibilité électromagnétique Directive 2000/14/CE relative aux émissions sonores extérieures Directive 2011/65/UE relative à la limitation de l'utilisation de certaines substances dangereuses dans les équipements électriques et électroniques 2006/42/WE w zmienionej dyrektywie maszynowej 2014/30 / UE ze zmianami Dyrektywa Kompatybilność elektromagnetyczna 2000/14/WE w zmienionej dyrektywie w sprawie hałasu na zewnątrz 2011/65 / UE ze zmianami Dyrektywa Ograniczenie stosowania niektórych niebezpiecznych substancji w sprzęcie elektrycznym i elektronicznym 2006/42/CE, astfel a fost modificată Directiva privind echipamentele 2014/30/UE, astfel a fost modificată Directiva privind compatibilitatea electromagnetică 2000/14/CE, astfel a fost modificată Directiva privind zgomotul în aer liber 2011/65/UE, astfel a fost modificată Directiva privind limitarea utilizării anumitor substanțe periculoase în echipamentele electrice și electronice Directiva sobre maquinaria modificada 2006/42/CE 2014/30/UE modificada Directiva Compatibilidad electromagnética 2000/14/CE modificada Directiva sobre ruido al aire libre 2011/65/UE modificada Directiva Restricción del uso de determinadas sustancias peligrosas en equipos eléctricos y electrónicos 2006/42/CE como diretiva de máquinas alteradas 2014/30/UE como alteração da compatibilidade eletromagnética 2000/14/CE como diretiva de ruído exterior alterada 2011/65/UE como restrição diretiva alterada da utilização de certas substâncias perigosas em equipamentos elétricos e eletrônicos</p>	
<p>Measured Sound Power Level Le niveau de puissance acoustique mesuré Zmierzony poziom mocy akustycznej Nivel de putere acustică măsurat Nível de potencia sonora medido Nível de potência sonora medido : 95 dB(A)</p>	<p>Guaranteed Sound Power Level Le niveau de puissance acoustique garant Gwarantowany poziom mocy akustycznej Nivel de putere acustică garantat Nível de potencia sonora garantizado Nível de potência sonora garantido : 96 dB(A)</p>
<p>References to the relevant harmonised standards used or references to the other technical specifications in relation to which conformity is declared: Références des normes harmonisées pertinentes appliquées, y compris la date de celles-ci, ou des autres spécifications techniques, y compris la date de celles-ci, par rapport auxquelles la conformité est déclarée: Odwolania do odnośnych norm zharmonizowanych, które zastosowano, wraz z datą normy, lub do innych specyfikacji technicznych, wraz z datą specyfikacji, w odniesieniu do których deklarowana jest zgodność: Trimiteri la standardele armonizate relevante folosite, inclusiv data standardului, sau trimeri la celelalte specificații tehnice, inclusiv data specificațiilor, în legătură cu care se declară conformitatea: Referencias a las normas armonizadas pertinentes utilizadas, incluidas las fechas de las normas, o referencias a las otras especificaciones técnicas, incluidas las fechas de las especificaciones, respecto a las cuales se declara la conformidad: Referências às normas harmonizadas aplicáveis utilizadas, incluindo a data da norma, ou às outras especificações técnicas, incluindo a data da especificação, em relação às quais é declarada a conformidade:</p>	

EN 62841-1:2015+A11:2022
EN 15503:2009+A1:2013+A2:2015
EN IEC 55014-1:2021
EN IEC 55014-2:2021

Authorised signatory and technical file holder/signataire et responsable de la documentation technique
autorisé/ podmiot uprawniony do wystawienia i adres prezechowywania dokumentacji technicznej/
semnatar autorizat și deținător al dosarului tehnic/firmante autorizado y titular del expediente tecnico/
signatário autorizado e detentor da ficha técnica

Kingfisher International Products B.V.,
Rapenburgerstraat 175E,
1011 VM Amsterdam,
The Netherlands

A handwritten signature in black ink, appearing to read 'David Awe', with a long horizontal stroke extending to the right.

David Awe
Group Quality Director

30/07/2024



(UK) DECLARATION OF CONFORMITY

Product

- Cordless Blower
- 82006.1/ERT1028GBL
- Serial number 00001-99999

Name and address of the manufacturer or his authorised representative:

Kingfisher International Products Limited
1 Paddington Square
London
W2 1GG
United Kingdom

This declaration of conformity is issued under the sole responsibility of the manufacturer.

Object of the declaration

Product

Model

Cordless Blower

82006.1/ERT1028GBL

The object of the declaration described above is in conformity with the relevant legislation:

2006/42/EC as amended Machinery Directive
2014/30/EU as amended Directive Electromagnetic compatibility
2000/14/EC as amended Outdoor Noise Directive
2011/65/EU as amended Directive Restriction of the use of certain hazardous substances in electrical and electronic equipment
Measured Sound Power Level: 95 dB(A)
Guaranteed Sound Power Level: 96 dB(A)

References to the relevant designated standards used or references to the other technical specifications in relation to which conformity is declared:

EN 62841-1:2015+A11:2022

EN 15503:2009+A1:2013+A2:2015

BS EN 62841-1:2015+A11:2022

BS EN 15503:2009+A1:2013+A2:2015

EN IEC 55014-1:2021

EN IEC 55014-2:2021

BS EN IEC 55014-1:2021

BS EN IEC 55014-2:2021

Authorised signatory and technical file holder:

Kingfisher International Products Limited
1 Paddington Square
London
W2 1GG
United Kingdom

David Awe
Group Quality Director

On: 30/07/2024

Manufacturer :

UK Manufacturer:

Kingfisher International Products Limited,
1 Paddington Square, London, W2 1GG,
United Kingdom

EU Manufacturer:

Kingfisher International Products B.V.
Rapenburgerstraat 175E
1011 VM Amsterdam
The Netherlands

EN www.diy.com

www.screwfix.com

www.screwfix.ie

**To view instruction manuals online,
visit www.kingfisher.com/products**